

PROJECT NAME:	TYPE:
---------------	-------



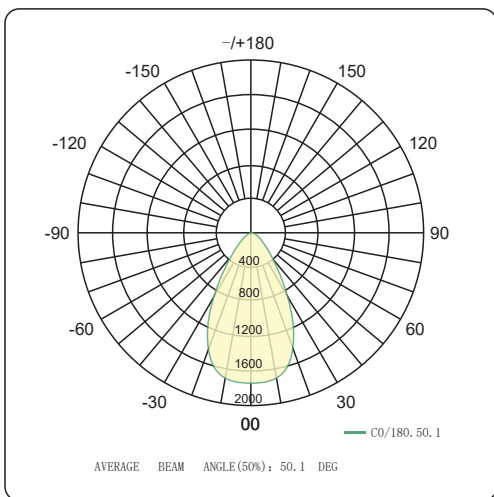
N75 - - - - -

MODEL	SHAPE	VERSION	TRIM	REFLECTOR FINISH	LED CHIP	CRI/LUMENS	CCT	BEAM ANGLE	DIMMING	ACCESSORIES
N75	R Round	65	QS Microflange	B Black W White	B Bridgelux	90 90+ CRI 12 Watts Lumens Dlvd.-1188	27 2700K 30 3000K 35 3500K 40 4000K	50 50° 35 35°	CMEM55 On/Off; Triac PhaseDim; 120VAC KIG On/Off; Triac Phase Dim; 120/277VAC <i>*Remote Placed</i>	NCP-SR3-R21 Non-IC Bracket NCBX-SR3-R21 IC Box BRKT-2SR75A Non-IC Bracket for Dual Lights <i>*For more details,pls refer to page 3</i>
						97 97+ CRI 12 Watts Lumens Dlvd.-864		50 50° 35 35° 25 25°		
						Dim To Warm 90 90+ CRI 12 Watts Lumens Dlvd.-778	1830 1800-3000K	50 50° 35 35°		
						90 90+ CRI 12 Watts Lumens Dlvd.-840 <i>*External 5CCT Selector</i>	2765A 2700K 3000K 4000K 5000K 6500K	50 50° 35 35°		
					TUNABLE WHITE 90 90+ CRI 12 Watts Lumens Dlvd.-840	2765 2700-6500K	25 25°	<i>*Dali 2ch Driver Remote Placed</i>		

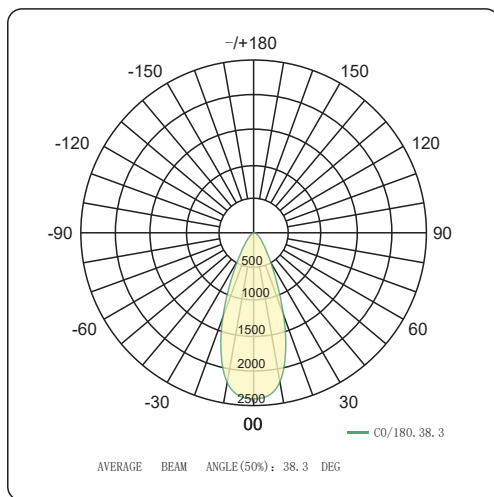
3 Inch Recessed Round Fixed IP65 Outdoor Downlight

Photometry

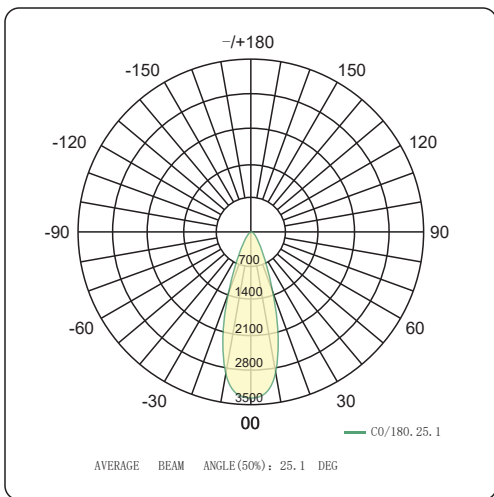
Beam angle: 50°
Delivered Lumens: 1188 lumens
CCT: 4000K
CRI: 90
Power: 12W
Efficacy: 99lm/W



Beam angle: 35°
Delivered Lumens: 1104 lumens
CCT: 4000K
CRI: 90
Power: 12W
Efficacy: 92lm/W

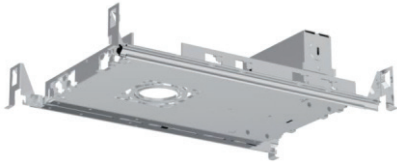


Beam angle: 25°
Delivered Lumens: 756 lumens
CCT: 4000K
CRI: 97
Power: 12W
Efficacy: 63lm/W



ACCESSORIES

Brackets for New-Construction (4-legs)



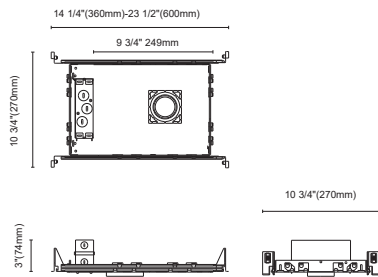
NCP-SR3-R21

For trim&trimless

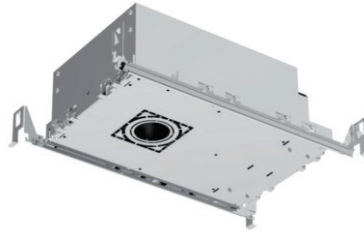
Cut out:

- Round: Ø 3" (Ø 77mm)
- Ø 2" (Ø 62mm)
- Ø 1" (Ø 50mm)

Square: □ 3" (□ 77mm)



IC-BOX for New-Construction (4-legs)



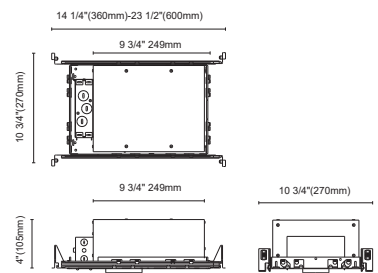
NCBX-SR3-R21

For trim&trimless

Cut out:

- Round: Ø 3" (Ø 77mm)
- Ø 2" (Ø 62mm)
- Ø 1" (Ø 50mm)

Square: □ 3" (□ 77mm)



Cut out



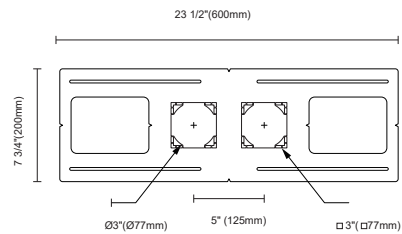
Brackets for New-Construction



For trim & trimless

Cut out:

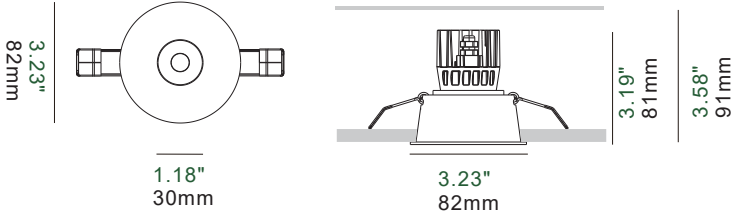
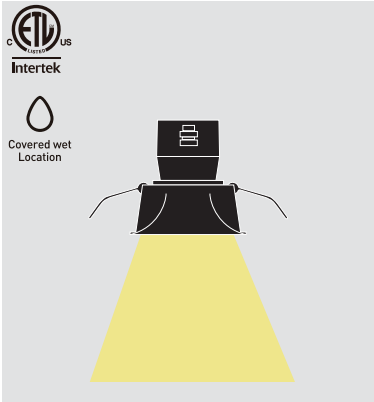
- Round: Ø 77mm*2 (Ø 77mm*2)
- Square: □ 77mm*2 (□ 77mm*2)



Remark

Tailored brackets are available with a reasonable surcharge, details as below

- The customized bracket dimensions are still the same as the existing ones, 600*200mm
- Hole sizes can be customized within the range of 25-100mm
- Holes quantity can be indicated, 1-7pcs
- Holes positions on the bracket can be done as requests



Microflange

